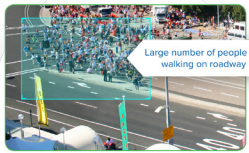


H4 Mini Dome Camera Line

The H4 Mini Dome is the smallest and most discreet camera within the Avigilon H4 platform at an entry-level price point. It provides exceptional image quality in 1.3, 2 and 3 MP resolutions.



Embedded with AI Technology

The H4 Mini Dome camera features Unusual Motion Detection (UMD), an advanced artificial intelligence (AI) technology that, without any predefined rules or set up, continuously learns what typical activity in a scene looks like, and then detects and flags unusual motion.



Easy to Install

The H4 Mini Dome's modular design snaps into surface, in-ceiling, or pendant mount adapters for fast and easy installations.



KEY FEATURES

Small Camera Footprint and Profile

HDSM SmartCodec™ and Idle Scene Mode Technologies

LightCatcher™ Technology

Optional Adaptive IR Technology

BENEFITS

Standard surface mount model has a footprint of only 2.8 inches, extending 2.0 inches from the installation surface. The in-ceiling adapter offers a profile of only 1.5 inches, with a footprint of 3.5 inches.

Automatically optimize compression levels for regions in a scene to maximize bandwidth savings up to 50 percent*, minimize storage consumption, and maintain high-quality imaging.

Collects significantly more detail from a low-light scene to deliver higher-quality color images with less image noise than other low-light cameras.

Automatically adjusts the IR beam width and illumination levels to provide consistent lighting across the field of view.

avigilon.com/h4-mini-dome | asksales@avigilon.com

*When activated, HDSM SmartCodec technology can reduce bandwidth by up to 50 percent compared to standard H.264 compression. UMD user interface has been simulated for illustrative purposes.